

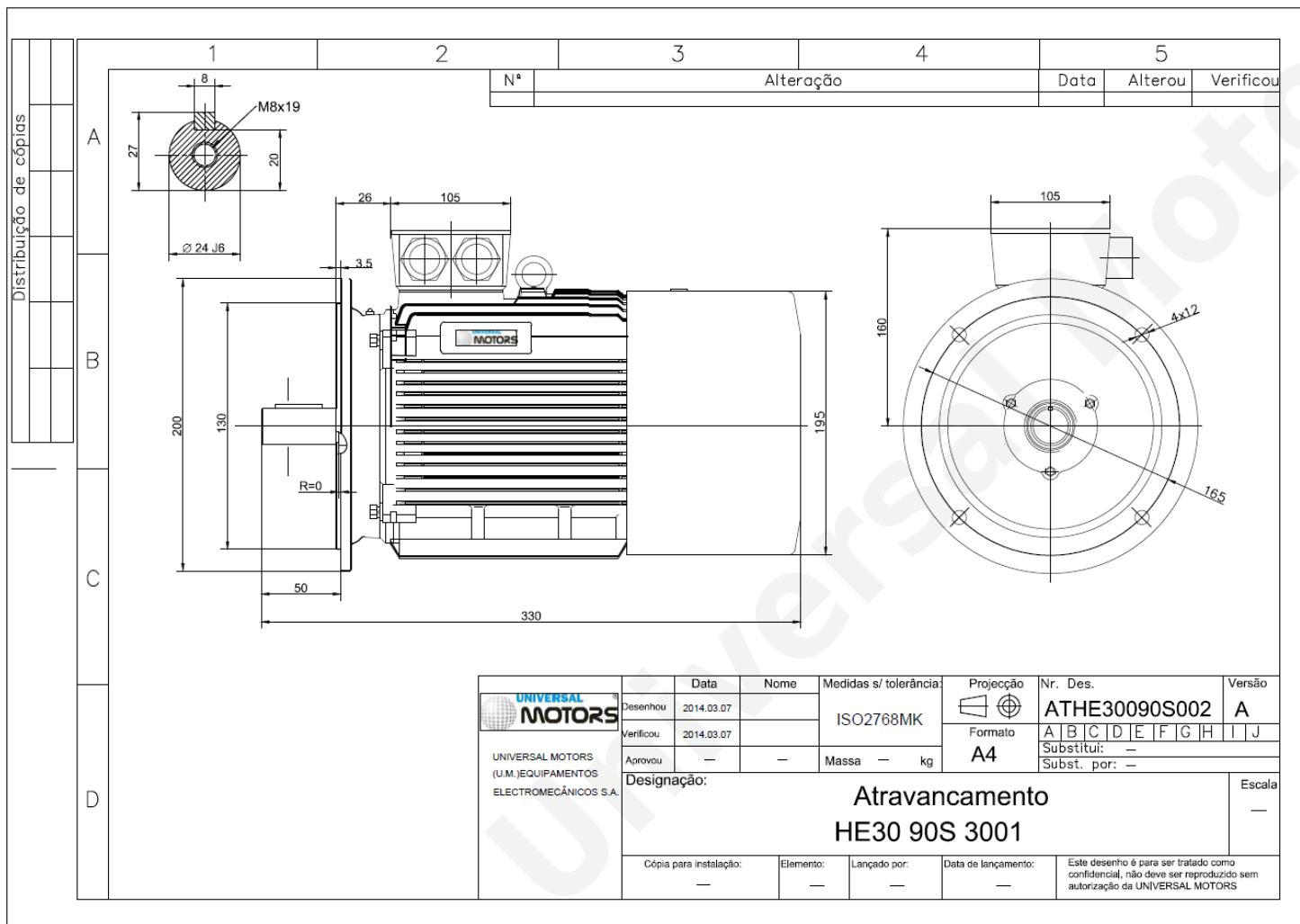
TECHNICAL DATA

Three Phase Electric Motors - Cast Iron Frame

HE30 90 S1 4 IE2

1.1 kW / 1.5 Cv

1420 RPM



Motor type:	HE30 90 S1 4 IE2
Output:	1.1 kW / 1.5 Cv
Speed (min ⁻¹):	1420 RPM
Frequency:	50 Hz
Voltage:	400 V
Current:	2.6 A
Power factor (Cos Ø):	0.75
Poles:	4
Insulation class:	F
Temperature rise Class:	B
Efficiency 50%:	81.4 %
Efficiency 75%:	82.7 %
Efficiency 100%:	81.4 %
Torque:	7.4 N.m
Tstarting/Tnominal:	2.3
Istarting/Inominal:	7.3
Tmaximum/Tnominal:	2.3
Noise:	50 Db(A)
Weight:	28 Kg
Bearing DE:	6205 2Z C3
Bearing NDE:	6205 2Z C3

Regime - S1

Altitude - 1000m

Environment Temperature - 40°C

CONTACTS:

UNIVERSAL MOTORS Tel: +351 252 299 080
 Rua de São Brás,745 Fax: +351 252 299 089
 4480-782 VILA DO CONDE Mail: geral@universalmotors.pt

* References applied only in the UK